

Mark Fry – VFX Artist

email: contact@markfry.tv

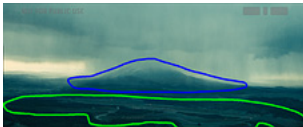
www.markfry.tv

Linkedin: uk.linkedin.com/in/frymark

Location: London, UK

VFX Industry Reel 2012 Breakdown

This is my roto/prep industry reel of work done while at Double Negative:
The Dark Knight Rises (2012), *Total Recall* (2012), *Rush* (2013)



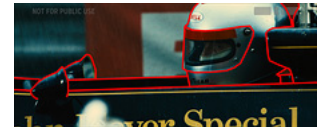
Prep out buildings, track in DMP for race track & Mt. Fuji



Roto FG + MG people



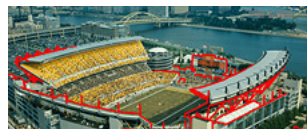
Roto/key various people



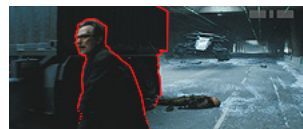
Roto driver, car



Roto FG + MG cars



Roto stadium



Roto Gordon, truck



Roto the Bat vehicle, debris



Roto Batman



Roto FG + MG vehicles



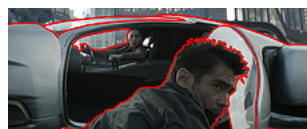
Roto the Bat vehicle



Roto actor, FG + MG cars



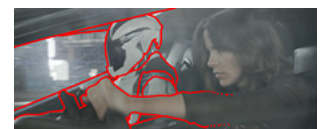
Roto actor + his shadow



Roto actors, car



Roto FG + MG cars



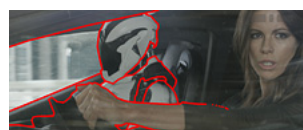
Roto actor, robot, car



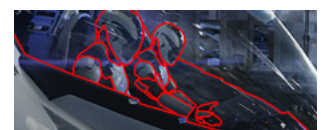
Roto FG + MG cars, robot



Roto FG + MG cars



Roto actor, robot, car



Roto car, robots



Roto FG people, poles, railings, shadows



Prep to remove burning cars, smoke, rebuild centre of plate



Prep to clean up race track



Roto MG people, set



Roto car, railings, crowds



Roto railings



Roto FG + MG crowd, flags



Comp: sky & reflection replacement